

# The Mighty Waikato

New Zealand

*Come with us. Share  
our waka, and feel our  
strength and passion...*



## Why Waikato:

- Central location connecting key North Island destinations
- Iconic, high-demand visitor experiences
- Strong fit for FIT, self-drive, and group itineraries
- Wide range of accommodation available all year round
- Authentic, less congested alternative to major centres

Located in the central North Island, Waikato is one of New Zealand's most connected and versatile touring regions. Positioned between Auckland, Rotorua and Taupō, it is an ideal hub for FIT, self-drive and multi-region itineraries.

Home to globally recognised experiences including Hobbiton Movie Set™, famous left-hand surf breaks in Raglan and Hamilton Gardens, the region offers a diverse range of products within close proximity — from coast to countryside.

*This is a place beyond the expected...*





Hamilton Gardens



Te Awa River Ride



Raglan



Hobbiton™ Movie Set



Sanctuary Mountain Maungatautari



Zealong Tea Estate



Strawberry Farm



Wairere Falls



Hamilton Gardens

*...which constantly surprises with natural beauty, powerful history and out-of-this-world experiences.*



# Where Waikato fits in itineraries

## Domestic Jet Connectivity

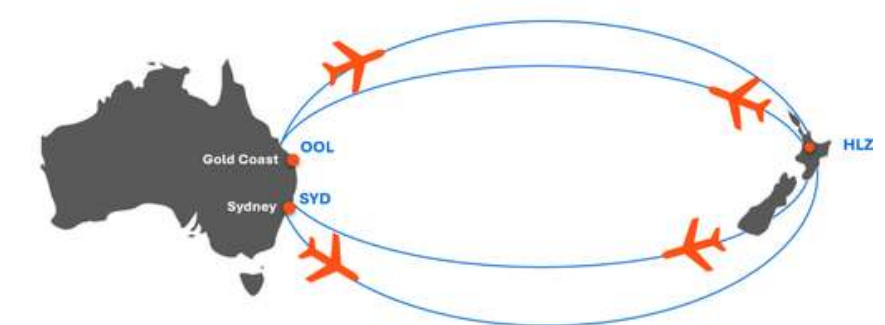
Air New Zealand and **Jetstar** both operate daily 75-minute direct flights between Hamilton and Christchurch, providing consistent and convenient domestic access.



## International Access

**Jetstar** now offers direct flights into Hamilton Airport from Sydney & Gold Coast, Australia

**Fly direct. Arrive closer. Experience more.**



## Why this matters for trade

- Provides an easy entry and exit point for Central North Island itineraries
- Hamilton Airport is a short 45-minute drive to Hobbiton Movie Set
- Supports seamless combined North and South Island travel
- Ideal for self-drive journeys
- Enables authentic regional travel programmes

*Always far from the ordinary, this is a magical region of villages to play, relax, connect and explore...*

# Example Itineraries for the Waikato (1-3 nights)

## FIT/Self-Drive



### Stay

- Novotel Tainui, Hamilton City
- Hidden Lake Hotel & Apartments, Cambridge
- Te Whaanga Resort & Spa, Raglan
- Matamata Lodge, Matamata

### Experience

- Hobbiton Movie Set™
- Raglan Sunset Cruises
- Hamilton Gardens
- Carve your own Pounamu (Greenstone)
- Sanctuary Mountain Maungatautari

### Dine

- MADE, Hamilton East
- Palate, Hamilton City
- Alpino, Cambridge
- Good George Brewing, Hamilton City

## Premium/Luxury



### Stay

- KOSH Properties, Hamilton City
- Clements Hotel, Cambridge
- Te Whaanga Resort & Spa, Raglan
- Te Karaka Lodge, North Waikato

### Experience

- Hobbiton Movie Set™
- City to Surf Scenic Helicopter Experience
- Hamilton Gardens
- Zealong Tea Estate Tour & High Tea
- Takapoto Estate Wine Tasting

### Dine

- Alpino, Cambridge
- The Gallery, Clements Hotel, Cambridge
- Palate, Hamilton City
- The Green, Hamilton East

## Families



### Stay

- KOSH Properties, Hamilton City
- Hidden Lake Hotel & Apartments, Cambridge
- Raglan Holiday Park, Raglan
- Castaways Resort, North Waikato

### Experience

- Hobbiton Movie Set™
- Raglan Surf School
- Hamilton Gardens
- Hamilton Zoo
- E-Bike Hire/Kayaking Tours

### Dine

- MADE, Hamilton East
- Palate, Hamilton City
- Good George Brewing, Frankton
- Mr Pickles, Hamilton City
- Good Union, Cambridge

## Special Interest



### Stay

- Oar & Paddle, Cambridge
- Takapoto Estate, Mangatautari
- Te Whaanga Resort & Spa, Raglan
- KOSH Properties, Hamilton City
- Te Karaka Lodge, North Waikato

### Experience

- Hobbiton Movie Set™
- Sanctuary Mountain Maungatautari
- Raglan Rock Adventure Co
- Carve your own Pounamu (Greenstone)

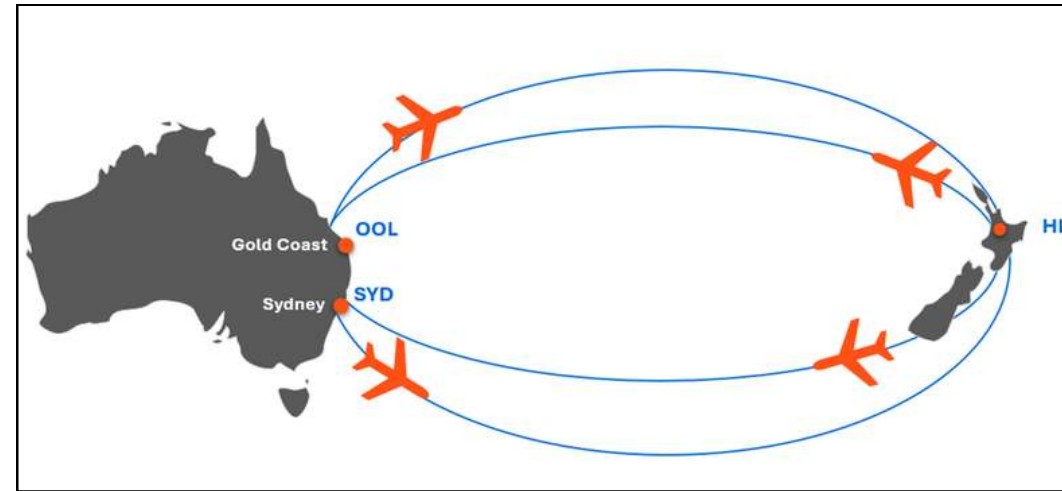
### Dine

- MADE, Hamilton East
- Palate, Hamilton City
- Good George Brewing, Frankton
- Hayes Common, Hamilton East
- Koi Whisky Lounge, Cambridge

*Here, our kaitiaki runs deep, our mana inspires and unforgettable discoveries are just around the bend.*

# New Developments

- BNZ Theatre, Hamilton
- Pullman Hamilton opening late 2026
- Clements Hotel - 1866 speakeasy basement bar
- Flights & Connectivity
- Hamilton Gardens - new gardens in development
- Explore Waikato



*A welcoming place where our people keep it real – and experiences become unreal....*

**The Mighty  
Waikato**  
Where magic runs deep



# Activities

## Hobbiton™ Movie Set



**New Zealand's most recognised and requested visitor experience.**

### Key Experience

- Guided tour through the Shire™
- Visit Hobbit Holes™, Bag End & Green Dragon Inn™
- Includes a drink and immersive storytelling

### Ideal for

FIT, Groups, Film, First-time NZ visitors

### Trade Notes

- Pre-booking essential
- Multiple departures daily
- All ages, accessible options available

## Hamilton Gardens



**A globally unique "garden storytelling" experience (not a botanical garden)**

### Key Experience

- 18 themed gardens across cultures + time
- 75-min guided storytelling tour
- Optional high tea / lunch add-on

### Ideal for

FIT, Premium, Cultural travellers, Groups

### Trade Notes

- Half-day to full-day experience
- 90% wheelchair accessible
- Open year-round

## Sanctuary Mountain Maungatautari



**New Zealand's largest mainland eco-sanctuary**

### Key Experience

- Guided forest walks inside predator free sanctuary
- Native wildlife: kiwi, takahē, kākā
- Wetlands + conservation storytelling

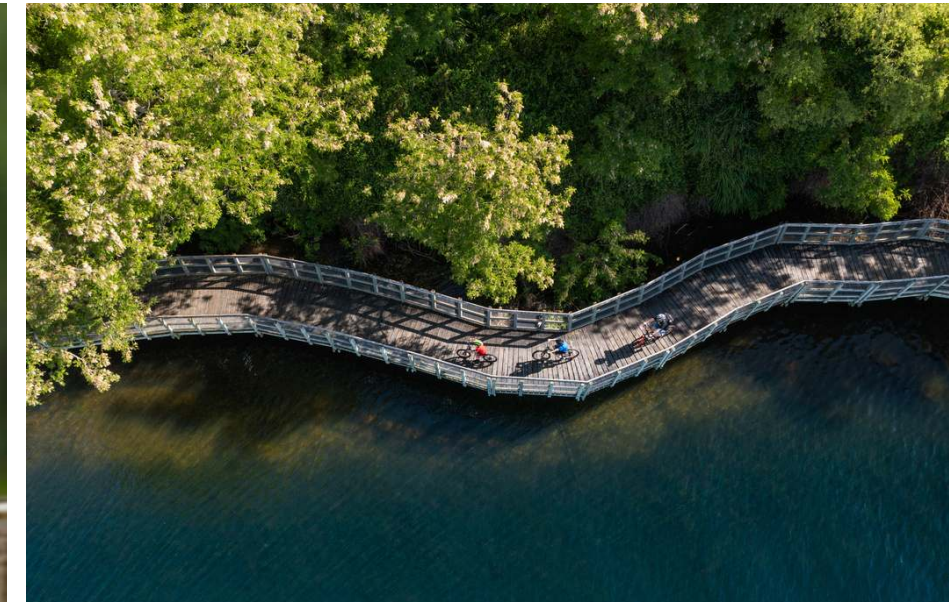
### Ideal for

Nature, Special interest, Premium, Educational groups

### Trade Notes

- Moderate fitness required
- Small group focus
- Multiple tour options

## Riverside Adventures



**Flexible, packaged cycling/kayaking experiences (easy to plug into itineraries)**

### Key Experience

- Guided bike rides + e-bike hire
- Multi-day cycle/kayaking packages with accommodation
- Shuttle + logistics included

### Ideal for

FIT, Active travellers, Families, Groups

### Trade Notes

- Min 2 pax
- Multi-day options available
- Strong add-on to self-drive itineraries

## Raglan Boat Charters



**Relaxed, all-ages harbour cruise with strong local flavour**

### Key Experience

- West Coast harbour cruise with commentary
- Sunset + lunch cruises with fish & chips
- Wildlife + limestone formations

### Ideal for

Families, FIT, Groups, Leisure

### Trade Notes

- Up to 70 pax (private)
- Year-round group options
- Easy add-on from Hamilton

## Camjet Boat Tours



**Short, high-impact adrenaline experience (great itinerary filler)**

### Key Experience

- High-speed jet boating (up to 88 km/h)
- 360 spins + gorge scenery
- Option for scenic or adrenaline

### Ideal for

Families, Youth, Adventure, Groups

### Trade Notes

- 30–60 min duration
- Not suitable for children under 3 years
- Easy ½ day add-on

## Raglan Rock Adventure



**Multi-activity adventure operator (one supplier, multiple options)**

### Key Experience

- Caving + glowworms
- Canyoning + waterfalls
- Rock climbing experiences

### Ideal for

Adventure, Youth, Groups, Special interest

### Trade Notes

- Small group sizes
- Weather-dependent activities
- Booking essential

## Zealong Tea Estate



**Premium tea estate experience combining culture, hospitality and organic production**

### Key Experience

- Guided estate tour showcasing NZ's only commercial tea plantation
- Traditional tea ceremony and tasting of award-winning organic teas
- Signature High Tea with seasonal menu overlooking tea terraces

### Ideal for

FIT, Couples, Premium, Groups

### Trade Notes

- Allow 1–3 hrs depending on experience
- Bookings essential

## Raglan Surf School



**Learn to surf at one of the world's best left-hand breaks**

### Key Experience

- Beginner to advanced surf lessons
- Family + private coaching
- Equipment included

### Ideal for

Families, Youth, FIT, Lifestyle travellers

### Trade Notes

- Year-round
- Min age 10 for lessons
- Small group ratios

## Helicorp



**High-value, luxury add-on with strong "wow factor"**

### Key Experience

- Scenic flights (city → coast → Hobbiton)
- Multi-stop luxury itineraries
- Helicopter transfers + experiences

### Ideal for

Luxury, Honeymoon, High-value FIT

### Trade Notes

- Weather dependent
- Min 2 pax
- Premium pricing tier

## Sands Carving Studio



**Hands-on cultural carving experience with strong storytelling connection**

### Key Experience

- Carve your own pounamu pendant
- Guided by expert local carvers
- Māori cultural meaning and techniques

### Ideal for

FIT, Couples, Small Groups, Cultural Seekers

### Trade Notes

- Allow 2–4 hours
- Small group and private sessions
- Easy add-on in Hamilton itinerary

## Raglan Kayak & Paddleboard



**Scenic coastal and harbour-based water experience with nature and wildlife appeal**

### Key Experience

- Guided kayak tours on
- Paddle to waterfalls (including Bridal Veil Falls via combo options)
- Glowworm kayak tours (twilight/evening)

### Ideal for

Families, Youth, FIT, Lifestyle travellers

### Trade Notes

- Year-round
- Min age 10 for lessons
- Small group ratios



**Accommodation**

## Clements Hotel



### Cambridge - 5 Star Boutique

High-end, design-led stay in a charming town setting

#### Key Experience

- 29 room boutique heritage hotel
- Strong F&B offering (restaurant + bar)
- Ideal for luxury itineraries

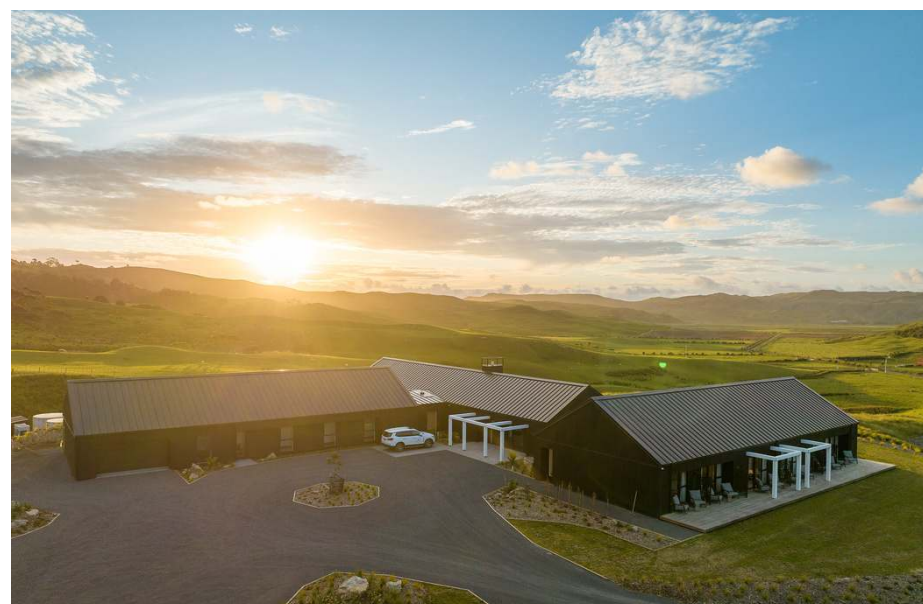
#### Ideal for

Premium, Couples, MICE

#### Trade Notes

- Group buyout options
- Centrally located in Cambridge

## Te Karaka Lodge



### Port Waikato - Luxury Farm Stay

Authentic NZ farm experience with luxury positioning

#### Key Experience

- Hosted lodge experience
- Farm tours + chef dining
- Remote, nature-based stay

#### Ideal for

Luxury, Honeymoon, Special interest

#### Trade Notes

- 10 rooms/sleeps up to 20
- Seasonal closure (winter)
- Exclusive-use options

## Hidden Lake Hotel & Apartments



### Cambridge - Boutique luxury

Lakeside boutique hotel offering elevated comfort in a central Cambridge setting

#### Key Experience

- 34 rooms overlooking Lake Te Koo Utu
- Rooftop bar/dining with lake views
- Premium design with wellness focus (spa, sauna)

#### Ideal for

Premium, Couples, MICE

#### Trade Notes

Suitable for small groups and exclusive stays

## Novotel Tainui Hamilton



### Hamilton CBD - 4 Star Hotel

Central city hotel with riverfront location and full-service amenities

#### Key Experience

- Waikato River views and walking access to dining and attractions
- On-site restaurant, bar and conference facilities

#### Ideal for

Groups, FIT, Corporate, MICE

#### Trade Notes

- Suitable for group series and event
- Strong base for Waikato itineraries

## Te Whaanga Retreat



### Raglan Coast - Luxury/Unique

Rare mix of luxury lodge + coastal glamping

#### Key Experience

- Oceanfront lodge + glamping tents
- Private chef + spa
- Surf + lifestyle positioning

#### Ideal for

Premium, Couples, Special interest

#### Trade Notes

- 2-night minimum
- Exclusive-use options
- Helicopter access possible

## KOSH Properties



### Hamilton - Boutique holiday homes

Design-led private homes offering premium, self-contained stays

#### Key Experience

- High-end interiors with full amenities
- Private, self-contained accommodation

#### Ideal for

Families, FIT, Small Groups, Premium

#### Trade Notes

- Multiple properties available
- Ideal for longer stays and group bookings

## Takapoto Estate - The Lake House



### Cambridge - The Lake House

Luxury estate stay set within a working thoroughbred horse farm & winery

#### Key Experience

- Premium interiors with expansive outdoor living
- Access to estate experiences (equestrian, cycling, lake activities)

#### Ideal for

Premium, Couples, Groups, Incentives

#### Trade Notes

- Exclusive-use property
- Suitable for high-end itineraries and special occasions

## Matamata Lodge



### Matamata - Boutique Rural Retreat

Peaceful farm stay with boutique accommodation and scenic views

#### Key Experience

- Set on a working lifestyle property
- Views across farmland with animal interaction

#### Ideal for

Couples, FIT, Rural Seekers

#### Trade Notes

- 5 minutes from Matamata, close to Hobbiton™ Movie Set
- Strong add-on to Hobbiton and central North Island itineraries



**Tash Pearce**  
**Marketing, Media & Trade**  
**E. [tash@waikatonz.com](mailto:tash@waikatonz.com)**  
**P. 027 224 4943**

# **The Mighty Waikato**

**New Zealand**

***This is the Mighty Waikato. It's all yours to discover.***

**Mighty Waikato  
Product Manual**

